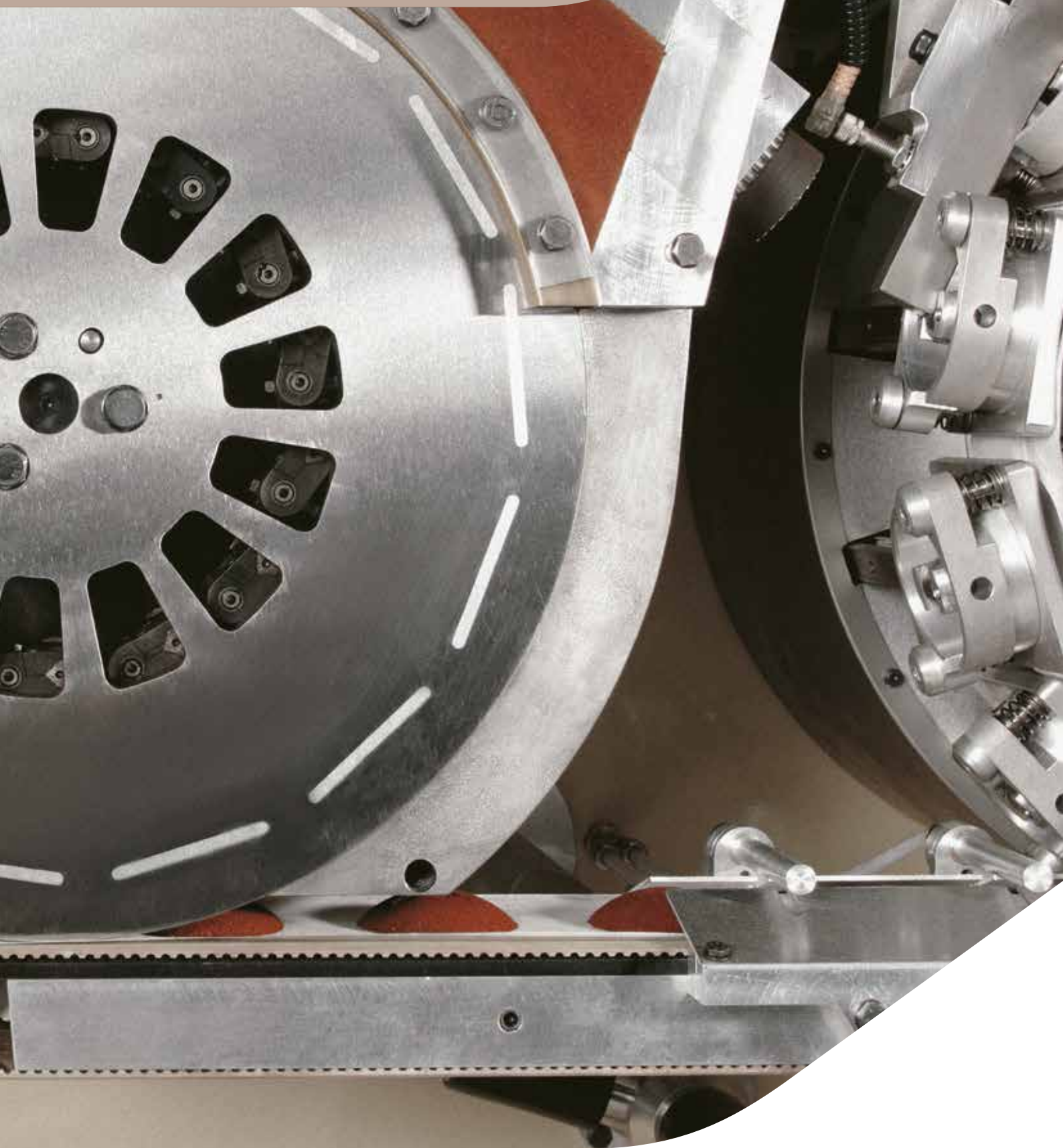


# CA1

ALL IN ONE



# THE IDEAS TAKE SHAPE

The CA1 represents the latest and most challenging innovation in this delicate packaging sector guaranteeing the highest efficiency together with the most compact machine lay-out, and perfectly in line with IMA's traditional concepts.





## CHOOSING A CA1

- HIGH SPEED MACHINE
- CONTINUOUS MOTION SOFT POD FORMING UNIT IN ONE LANE
- INTEGRATED V/F/F/S MACHINE
- HIGH PRODUCTION EFFICIENCY
- PROGRAMMABLE ELECTRONIC COUNTING AND STACKING
- AUTOMATIC SPLICING FOR PACKAGING MATERIALS
- FLEXIBLE, DIFFERENT SOFT POD AND PACK SIZES
- HIGH QUALITY SOFT PODS ORDERLY STACKED IN 1 OR 2 ROWS
- HIGH PRODUCT FLOW MECHANICAL CONTROL
- LOW MAINTENANCE



# STEP BY STEP



3

Volumetric doser with patented product compacting system



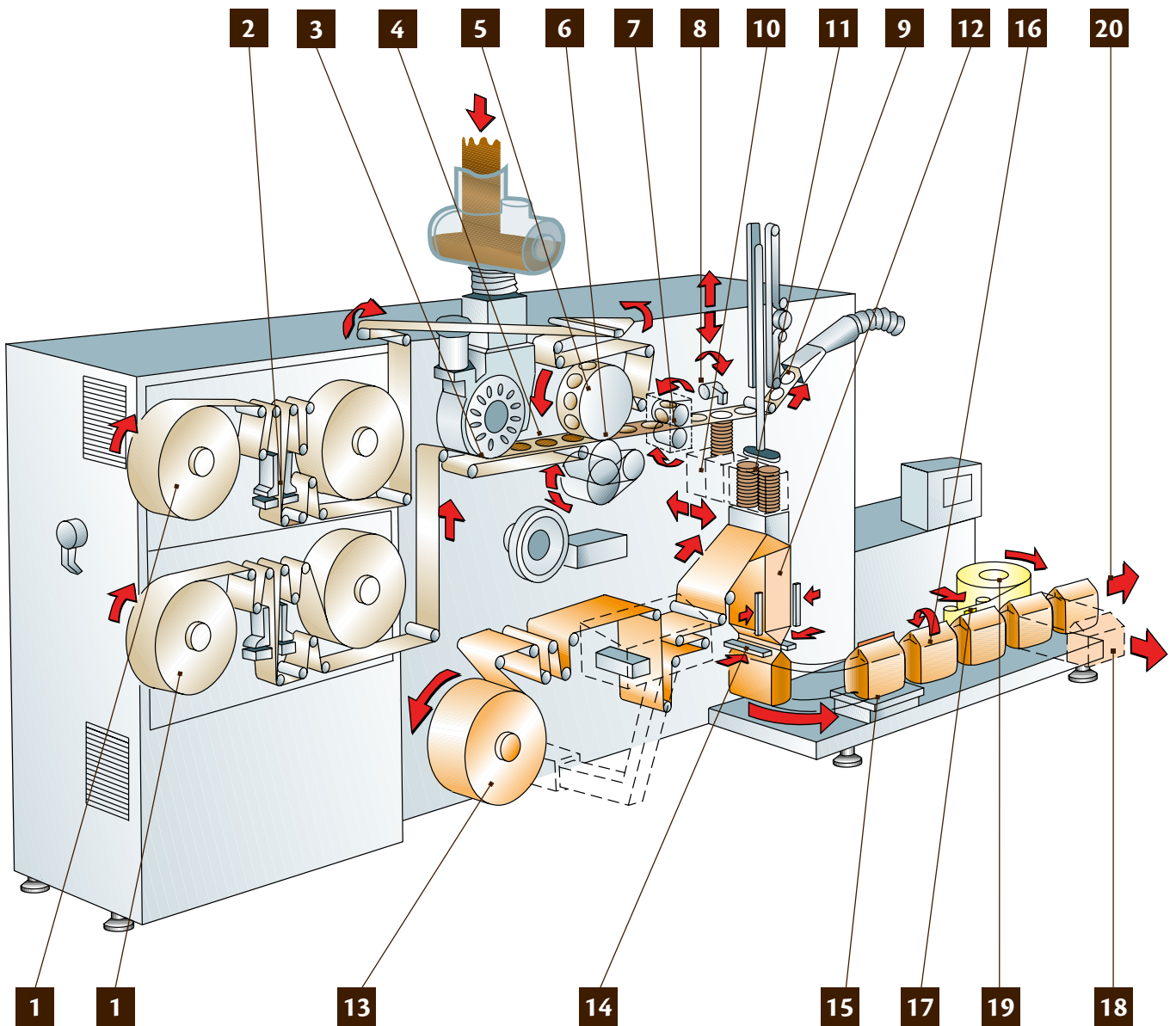
5

Mechanical filter paper pocket pre-forming wheel



8

Electronical pod counting and stacking





12

Integrated heatsealable pack forming



16

Top flap folding and pack exit

## MAIN FUNCTIONS

1. FILTER PAPER REEL
2. FILTER PAPER AUTOMATIC SPLICING
3. PRODUCT FEEDING AND DOSING
4. POD BAND TRANSFER
5. FILTER PAPER POCKET PRE-FORMING WHEEL
6. FILTER PAPER POD SEALING
7. FILTER PAPER POD CUTTING
8. POD COUNTING AND STACKING
9. WASTE PAPER COLLECTING UNIT
10. POD STACK TRANSFER
11. POD STACK INTRODUCTION INTO THE  
PACK FORMING UNIT
12. HEATSEALED PACK FORMING AND GAS  
FLUSHING EMISSION
13. PACK PAPER REEL
14. PACK HEATSEALING
15. PACK WEIGHING
16. PACK TOP FLAP FOLDING
17. ADHESIVE PAPER TAG APPLICATION
18. FAULTY PACK REJECTION
19. ADHESIVE PAPER TAG REEL
20. FINAL PACKAGE TRANSFER AND EXIT

# HIGH PRODUCT QUALITY GUARANTEED



## **A SOFT POD PACKAGING LINE IN ONE SINGLE MACHINE**

The IMA CA1 represents the latest innovation in the coffee pod packaging sector; this is a unique high speed machine able to produce soft pods in one single lane, counted, stacked and packed into a heatsealed vertical pack.

The compact machine lay-out (approximate length 4.30 mt.) and the integration of all auxiliary groups such as the pod counting and stacking unit, pack forming, filling and closing and weight checking guarantee at the same time the highest efficiency as well as a simplified maintenance and an improved user-friendliness of the machine itself.

A remarkable saving in packaging material is also guaranteed.

## **GAS FLUSHING UNIT**

The CA1 is equipped with a gas flushing unit to introduce nitrogen into the pack during its forming process to avoid coffee oxidization. This system ensures a very low oxygen residue (< 1%).

## **FILTER PAPER AUTOMATIC SPLICING**

The IMA CA1 is fitted with an advanced automatic splicing system for filter paper. Splicing is performed smoothly during machine production (no reduction in speed is necessary). It has been statistically proven that this sophisticated system saves time in the replacement of packaging material thereby contributing to the user-friendliness of this machine and guaranteeing an increase in machine efficiency.





## **PROGRAMMABLE ELECTRONIC COUNTING AND STACKING**

The CA1 is equipped with a programmable electronic counting system which allows a swift and easy count change over (also from 1 to 2 pod stacks), reducing to a minimum the need of any part replacement and guaranteeing always the correct number of pods in the stacking unit.

## **QUICK SIZE CHANGE OVER**

IMA's traditional concept of flexibility has been perfectly respected on the IMA CA1 by guaranteeing effortless size change overs.

## **NO LUBRICATION**

No lubrication is required on the CA1.



# MORE OPTIONS...

## OPTIONAL GROUPS AVAILABLE

- INTEGRATED PACK PRINTING UNIT
- UNIT FOR THE MECHANICAL FOLDING OF PACK TOP FLAP
- UNIT FOR THE APPLICATION OF AN ADHESIVE TAG FOR RECLOSABLE PACK OPTION
- CHECKWEIGHER UNIT WITH FEED-BACK SYSTEM
- COMPUTER CONNECTION FOR DATA COLLECTION





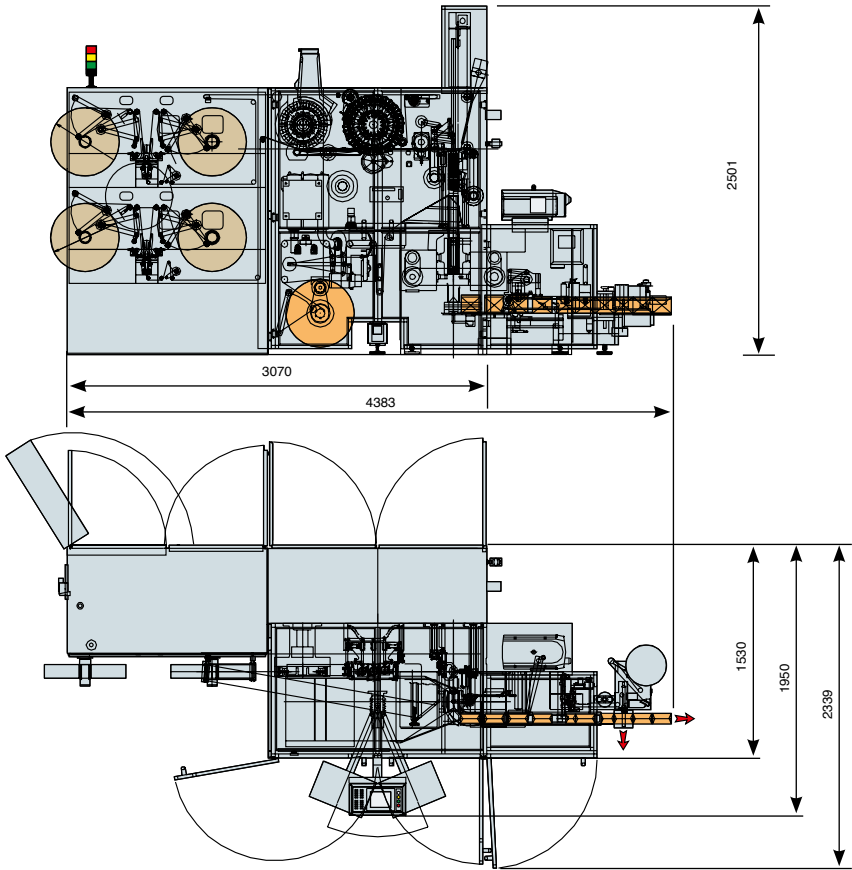


## INTEGRATION WITH COFFEE GRINDER

The production cycle of the CA1 can be completed by the integration of a coffee grinder that can be installed on the machine product hopper.



# CA1 GENERAL TECHNICAL DATA



**Machine speed:**  
Up to 800 soft pods/minute



**Compressed air:**  
Exercise pressure: 6 bar  
Consumption: max. 200 NI/min



**Power required:**  
Installed power max. 23 kw  
Consumption: max. 18 kw.



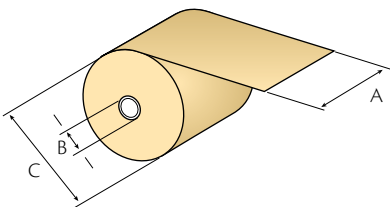
**Machine net weight:**  
Max. 4500 kg



**Noise:** <75 dB

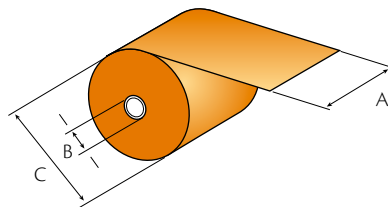
## PACKAGING MATERIALS AND PRODUCT SPECIFICATIONS

HEATSEALABLE FILTER PAPER REEL



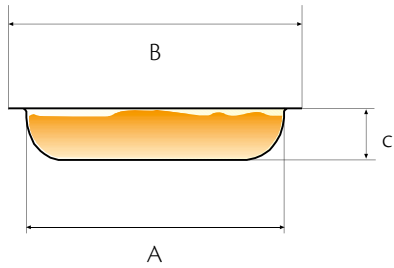
FILTER PAPER GRADE/sm	FILTER PAPER GRADE/sm	A mm	B mm	C mm
min.	19	70	75	500
max.	27	115	75	500

HEATSEALABLE PACK FILM REEL

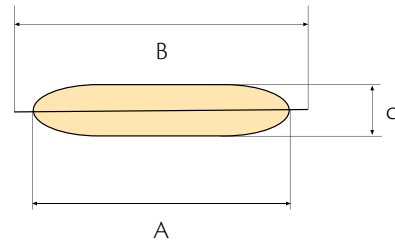


FILTER PAPER GRADE/sm	MATERIAL GRADE/sm	A mm	B mm	C mm
min.	75	310	76	500
max.	105	520	76	500

ASYMMETRICAL

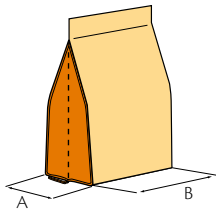


SYMMETRICAL



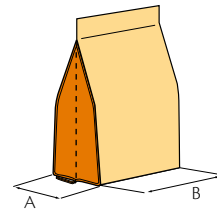
POD TYPE	PRODUCT	DOSAGE	A mm	B mm	C mm	SPEED
ASYMMETRICAL POD	COFFEE	7 ÷ 8	61	71	7 ÷ 7,5	UP TO 800
SYMMETRICAL POD	COFFEE	7 ÷ 8	61	71	7 ÷ 7,5	UP TO 700
SPECIAL ASYMMETRICAL POD FOR TEA AND HERBS	TEA and HERBS	1,5 ÷ 2	45	57	5	UP TO 600
ASYMMETRICAL 12,5 gr POD	COFFEE	12 ÷ 12,5	61	71	13	UP TO 450

HEATSEALED PACK FOR 1 OR 2 STACKS - STANDARD



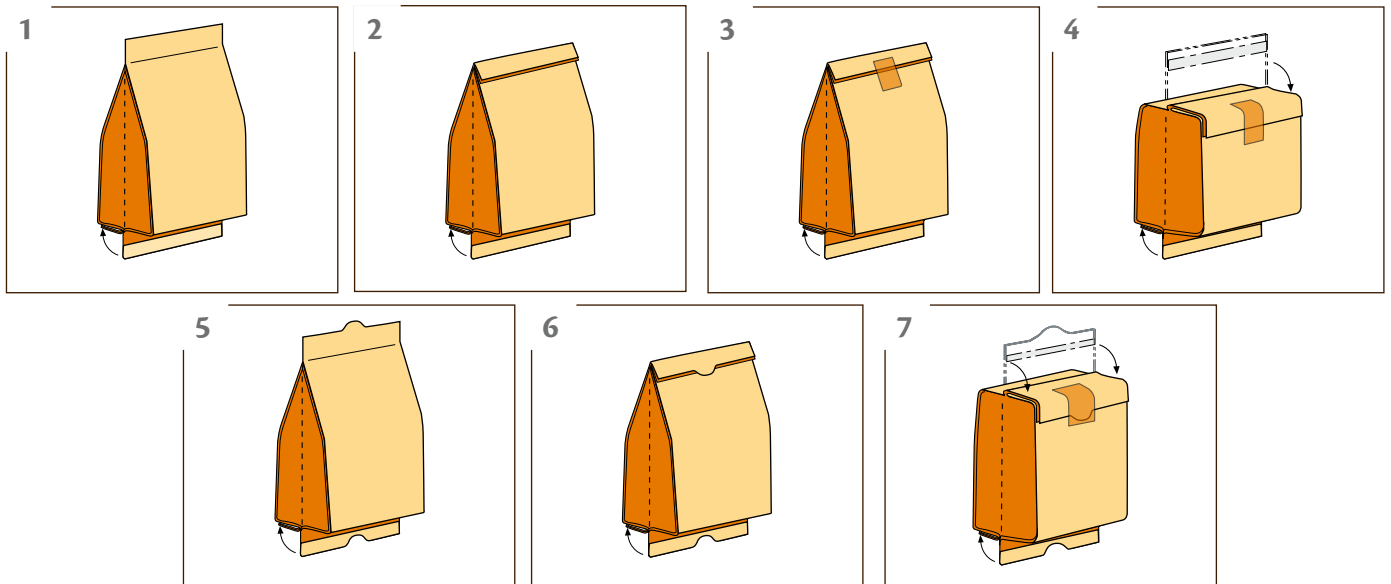
	STANDARD PACK COUNT	A mm	B mm	PACK PAPER UNWINDING
min.	8	65	75	185
max.	20	80	160	260

HEATSEALED PACK FOR 1 OR 2 STACKS - JUMBO



	JUMBO PACK COUNT	A mm	B mm	PACK PAPER UNWINDING
min.	18	65	135	260
max.	36	80	160	375

CA1 - TOP FOLDING OPTIONS





ima.it



IMA S.p.A.

**IMA COFFEE Division**

Via Emilia 428-442 - 40064 Ozzano dell'Emilia (Bologna) - Italy

Tel. +39 051 6514111

sales.coffee@ima.it

